

Specifications of 5.4m Aluminum Boat with Welding Construction



Our semi 'V' shaped bottom hull (only in the forward) Aluminium boat is useful for Patrolling, flood relief/ rescue operations in flowing rivers and lakes. Design and construction of boat will be certified by Indian Register of Shipping and Class compliance Certificate by IRS will be provided by each boat

Capacity :- 8 fully equipped persons or 600 kgs

1. Boat Size :- As per IRS approved plans with the following principal dimensions

Length Overall :- 5.4m
Breadth Overall :- 1.8m
Depth(Hull only):- 0.8m
Draft :- 0.3 m (max) Fully Loaded

- Speed :- 12 Knots
- 2. Color** :- Silver.
- 3. Hull construction** :- The boat will be made of 4mm Aluminum alloy (Marine Grade) 5083/5086 . It will be built in flat bottom at the rear with slight ‘V-shaped’ in forward as desired. Two nos of additional channels will be provided on either side of the keel up to transom. Longitudinal as well as transverse stiffness will all be provided as per IRS requirements.
- 4. Transom** :- Suitable transom with housing will be provided to take the load of 50HP OBM as per IRS requirements
- 5. Floor** :- Anti Skid Floor of Channel Plate.
- 6. Steering** :- Yes, remote control steering system.
- 7. Engine OBM** :- Mercury/Suzuki/Tohatsu 60HP, 4stroke OBM electric starting with remote control steering system, power trim and tilt with suitable propeller along with tachometer, speedometer, temperature meter, volt meter, along with 12V battery 100 Amps.
- 8. Reinforcements** :- Heavy duty rubbing strakes will be provided all round the vessel as per IRS recommendation.
- 9. Fuel Tank** :- 25Litre Fuel tank will be provided with the boat.
- 10. Approval** :- The vessels design and drawing will be approved by IRS as well as your Office meeting all parameters and the vessel will be built duly certified by IRS.
- 11. Welding** :- The vessels will be built in welding construction
- 12. Buoyancy** :- The vessel will be provided with sufficient buoyancy material P.U. Foam of 40 Kg/m3 density to make it unsinkable.
- 13. Low Draft** :- In view of your requirement the vessel if made flat bottom will ensure low draft.
- 14. Horn** :- Electrical - 12V.
- 15. Anchor with rope** :- Min. 10 kg anchor with 30 mtr, 12 mm pp rope) will be provided.
- 17. Seating** :- Individual Seat for 8 people (including Crew)
- 18. Special Features/Accessories:-**
- Fire extinguisher (ABC Type 1 Kg) -01 No.
 - First Aid Box - 01 No.
 - Bilge Pump, electrical – 01 No.

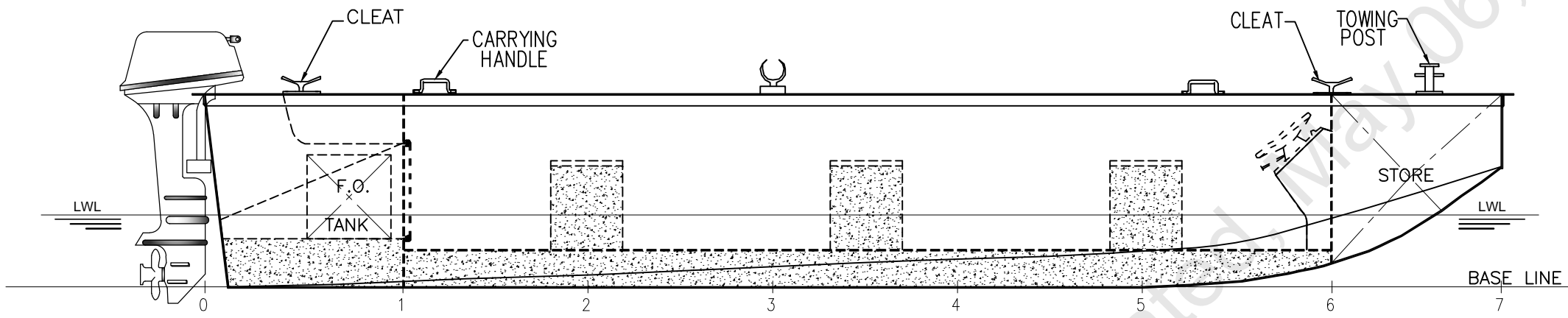
- Oars made of aluminum pipe and FRP blade - 2 nos.
- Towing Hooks – 2nos.
- Lifting Hooks - 4 nos.
- User Manual of boat and OBM.
- Connecting fuel pipe for OBM.
- Life line – 2nos. (15 meters each)
- Search light for visibility up to 50 meters with on board recharging facility-01 No.
- 8 Nos life jackets and 1 life buoy (Both as per SOLAS specifications and approved by IRS)
- 12V Exide Battery 100 Amp - 01 No.
- Folding Canopy

19. Instrumentation

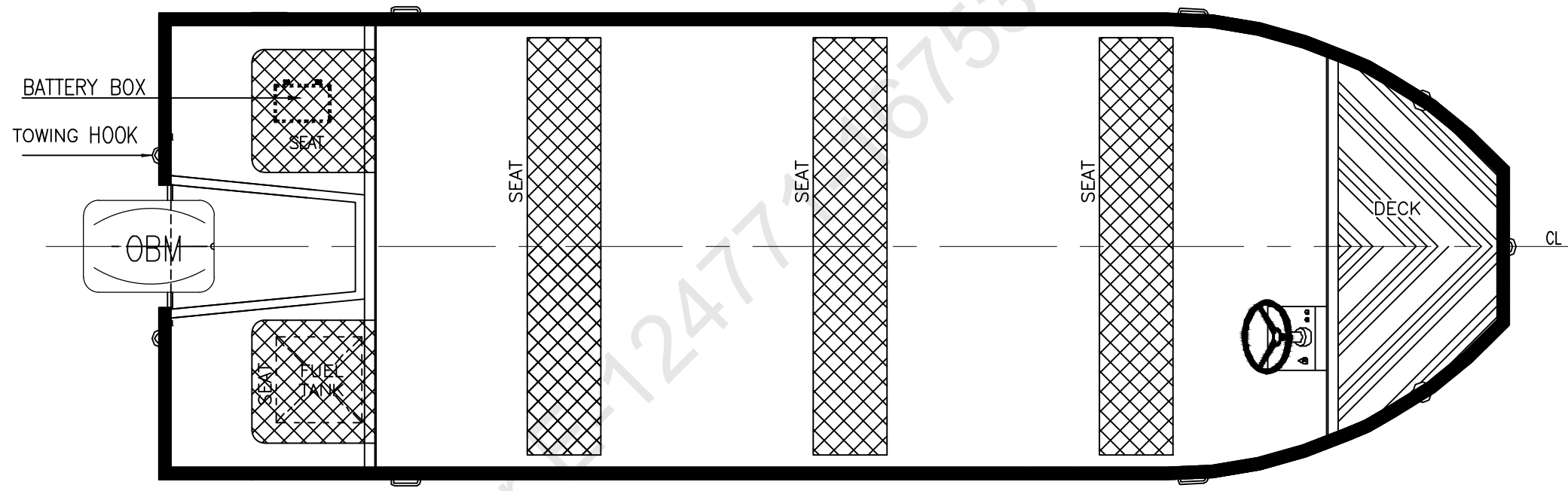
- Tachometer
- Speedometer
- Voltmeter

20. Design and construction plans – The design of the boat will be approved by I.R.S. (Indian Register of Shipping). It will also cater to following requirements:-

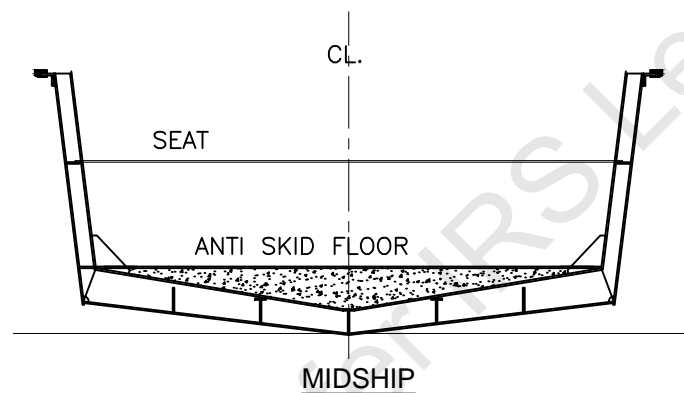
- The welding process for fabrication of the hull will be of inert Argon shielded process.
- The boat will be provided with sufficient buoyancy of P.U. foam of 40Kg/m³ density in order to make the boat unsinkable even with 10% reserve buoyancy.
- The boat will be designed for operating in shallow waters and hydro-dynamically designed.
- The boat will be designed to meet the stability against capsizing in swamped condition.
- The boat will have good intact stability within the rule requirements of IRS.
- **Bailing:** The boat will be provided with effective means of bailing through bilge pump (electrical).
- **Draining:** The boat will be provided with drain plug at the lowest point in the hull.
- **Towing Arrangement:** Arrangement for towing will be permanently fitted in the boat
- **Lifting Arrangement** : Arrangement for lifting will be permanently fitted in the boat



PROFILE



MAIN DECK



INDIAN REGISTER OF SHIPPING
MUMBAI
 DATE: 06 May 2021
NOTED FOR INFORMATION
 SEE LETTER E-124771-167534

MAIN DIMENSIONS:-

LENGTH (MLD)	5.40 M.
BREADTH (MLD)	1.80 M.
DEPTH (MLD)	0.80 M.
DESIGN DRAFT	300 MM.
STATION SPACING	540 MM.
SPEED	20 Knots (4 PERSON ONBOARD)
CAPACITY	12 Persons./ 1200Kg.
POWER	50 Hp (4 Stroke)

CLIENT :		U.P. PAC	
BUILDER :		Cleghorn Mfg. Co. Pvt. Ltd.	
		34,DRPHANGUANGE STREET, KOLKATA	
PROJECT :		5.4M Aluminium Boat	
TITLE :		General Arrangement Plan	
DRAWN	S.DUTTA	SCALE	DRG.No.
TRACED		1:20	CC/AL5.4M/01
CHECKED	D.SHA.		
APPROVED		REV.	A3